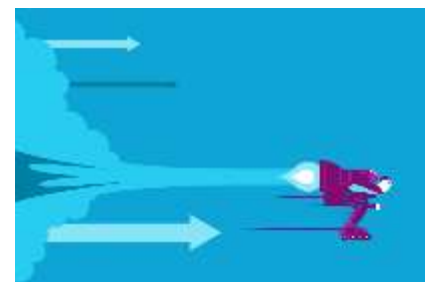


Accelerator Programme for AEC



Great strides have been made in same day emergency care across the NHS in recent years; the Ambulatory Emergency Care Network has played an important part in supporting organisations to achieve sustainable changes within their systems. The Network has worked with over 120 healthcare teams across England and Wales supporting them to rapidly set up and/or expand ambulatory emergency care with great results.

As a network, we have recently had requests to further support teams who would like to maximise their AEC services. We have designed a

	Managed in AEC	Not Managed in AEC
Appropriate for AEC	Box 1: Success (expect around 10-15% conversion)	Box 2: Missed Opportunity (clinically conservative / AEC capacity)
Not appropriate for AEC	Box 3a: Wasted Capacity (Non-Urgent Case)	Box 4: Appropriate Inpatient / outpatient care
	Box 3b: Potential Clinical Risk (Patient too acute ± too complex)	

programme that will enable participants make an objective assessment of their AEC service model including case mix and an insight into the potential for AEC in their organisation. Participants will demonstrate an increase in (Box 1) AEC activity by the end of the programme and to be able to correlate this with impact data.

- Do you have a desire to improve the impact of your AEC Service?
- Have you noticed mission creep within your AEC Service?
- Has your AEC development plateaued and you want to reenergise your work?
- Have you taken part in the original AEC Programme but weren't able to make full use of the resources and you are looking for more input that our extended offers?





If the answer is yes to any of these questions then this programme is for you.

This is a six-month intense collaborative programme to focus on making rapid changes to an existing service. There will be on-site support to work with teams to help gain a deeper understanding of the local challenges. There will also be a greater focus of locally delivered workshops to tailor

the programme to your local needs.

This will include a number of on-site workshops; national events; on-site support; on-line peer collaboration; webinars; virtual action learning sets; website resources and more.

Dependant on your need, on-site visits/workshops may include:

- Initial diagnostic site visit
- Clinical challenge workshop
- Human factors workshop
- Patient selection workshop
- Measurement for Improvement workshop
- Commissioning workshop
- Patient involvement event
- End of programme assessment visit



If you would like to know more about this programme or you would like to join the next cohort, please email aec@nhselect.org.uk

